



PERFORMING
ARTS
CENTER
San Luis Obispo

TECHNICAL PACKAGE

Christopher Cohan Center

Performing Arts Center San Luis Obispo

1 GRAND AVENUE, SAN LUIS OBISPO, CA 93407

Updated June 2024 | Version 14.0

TECHNICAL INFORMATION

Christopher Cohan Center Venues

The Performing Arts Center San Luis Obispo (PAC) complex consists of two buildings, the 498-seat Alex and Faye Spanos Theatre and the Christopher Cohan Center. The Christopher Cohan Center contains two performance venues, the 1286-seat **Harold Miossi Hall** and the 3,100 square foot “black box” **Pavilion**, which can seat up to 230 people. This technical information relates to the Christopher Cohan Center and its two performance venues.

Table of Contents

Contact Information	3
General Information	4
Directions & Parking	5
Specifications	6
Fly Line Schedule	7
House Equipment	8
House Electrics	9
House Lighting System	10
House Audio System	11
Policies	14
Floor Plans	16
Christopher Cohan Center Map	16
Harold Miossi Hall	17
Harold Miossi Hall Section + FOH Console	18
Harold Miossi Hall Proscenium Specs	19
Harold Miossi Hall Light Plot	20
Backstage + Dressing Rooms	21
Pavilion Specs	22
Pavilion Light Plot	23
Pavilion Electrics	24

CONTACT INFORMATION

Technical Staff

Tom McPherron (Technical Director)
(805) 756-1410
tmcpherr@calpoly.edu

Clint Bryson (Production Manager)
(805) 756-6595
cdbryson@calpoly.edu

Administrative Staff

Ryan Gruss (Director)
(805) 756-2790
rgruss@calpoly.edu

Heather Gray (Admin/Finance Support)
(805) 756-7555
hgray05@calpoly.edu

Andrea Castillo (Calendar Inquiries)
(805) 756-7223
acasti43@calpoly.edu

Elliott Stava (Ticketing)
(805) 756-7288
estava@calpoly.edu

Venue Website

PACSLO.ORG

Mailing Address

ATTN: Performing Arts Center
1 Grand Avenue
San Luis Obispo, CA 93407

Deliveries

All UPS, FedEx and Postal Service deliveries sent to the Performing Arts Center are first delivered to Cal Poly Distribution Services Warehouse and then transported to the PAC usually on the afternoon of delivery. No deliveries are received on weekends or campus holidays.

GENERAL INFO

Seating Capacity

Harold Miossi Hall (Continental Seating):

Orchestra [main floor]	604
Orchestra Pit / Lifts	205
Lift #1	78
Lift #2	127
Dress Circle	154
Balcony	171
Gallery	152
Total (all seats in)	1286
Total (main + lift #2)	1208
Total (orchestra concert)	1081

Pavilion (Black Box Space):

Chairs only	220
15 Rounds with 8 chairs/table	120

**Up to 140-160 people with 20 tables can be accommodated but seating gets very tight.*

(All numbers are approximate & should be confirmed with the Production Manager and ticket office)

Wi-Fi Information

Network: CalPolyGuest

Password: N/A

1. Go to the Wi-Fi menu on your device and select CalPolyGuest.
2. The guest Wi-Fi login page should open automatically. If it doesn't, launch a browser.
3. Click the login button to accept the 'Guest Network Terms of Agreement.'
4. You should then be connected to the network.

Dressing Rooms

Room 109	Green Room w/ couches & restroom (stage right)
Room 110	1 station w/ restroom & shower (stage right)
Room 111	1 station w/ restroom (stage right)
Room 115	5 stations w/ restroom (upstage)
Room 117	19 stations w/ restroom & showers (upstage)
Room 118	20 stations (upstage)
Room 119	19 stations (upstage)
Room 120	18 stations w/ restroom & showers (upstage)
Room 121	4 stations w/ restroom

Note: Each station is equipped with mirror, counter, lockable drawer & makeup lights. Each dressing room contains a full length mirror. We also have 2 portable full length mirrors.

Laundry Facilities

Room 114	Blue Room
	2 Washers (both drain into utility sink)
	2 Dryers (2nd dryer located outside of Room 115)

Phones

Making Calls: To make an outgoing call, press "7" to obtain an off-campus line.

Green Room 109 phone:	(805)756-7251
Dressing Room 110 phone:	(805)756-6280
Dressing Room 111 phone:	(805)756-6281
Dressing Room 115 phone:	(805)756-6280

DIRECTIONS & PARKING

Directions

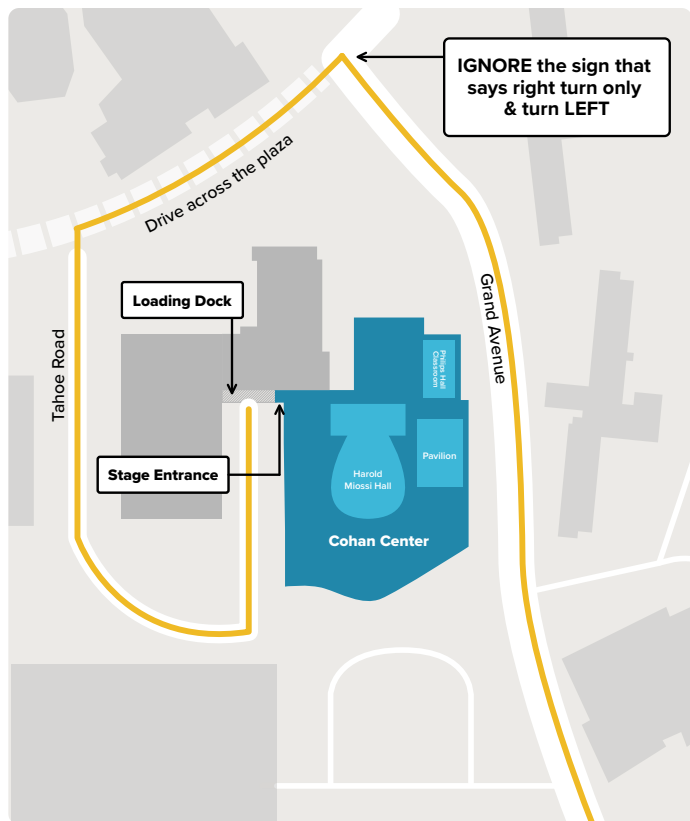
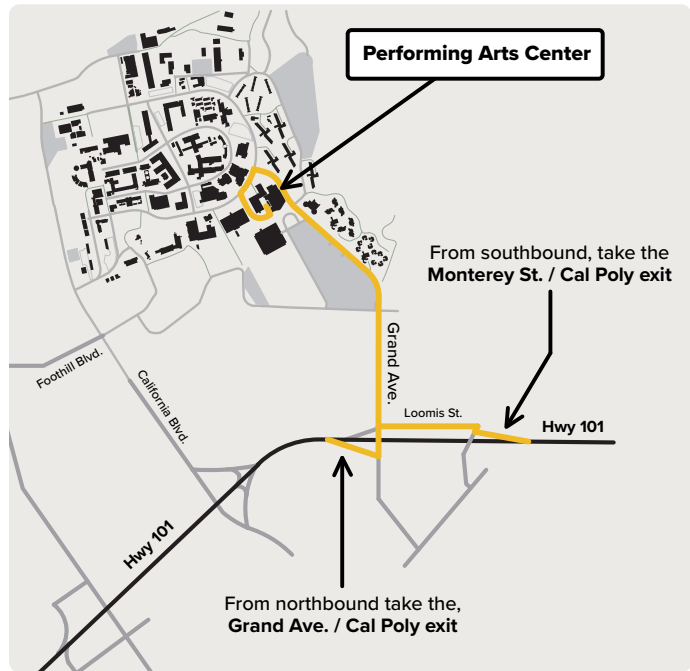
The Performing Arts Center San Luis Obispo is located on the Cal Poly campus. Due to a clearance limit on the Highland Drive entrance to campus, **make sure to enter on the GRAND AVENUE entrance.**

Loading Dock Directions

1. Follow Grand Avenue to the stop sign at Perimeter Road.
2. **TURN LEFT at Perimeter Road going over the red pavers on the one-lane access route** across the plaza (Note: Ignore the sign that says right turn only).
3. Turn left on Tahoe Road and circle around to the end until you see the mural.
4. Park in a marked space or the large loading dock. Display a campus permit AND dock pass (obtain from Stage Manager inside).

Parking

All campus parking regulations are strictly enforced by University Police year-around. All vehicles require a campus parking permit Monday through Thursday from 7:00 am to 10:00 pm and Friday from 7:00 am to 5:00 pm. **Parking at the loading dock always requires an additional Loading Dock Pass.**



SPECIFICATIONS

Loading Dock

The loading dock can accommodate 3 trucks and a tour bus. Additional buses may be parked in front of the trucks. The dock is 4' high with 2 dock plates. There is slight incline (2' rise in 30') from the dock to the roll-up door entrance which opens to a service hallway. There is also a long handicap ramp from pavement up to the loading dock.

Loading Dock Door	8'w x 14'h
Upstage Hallway	12'w x 14'h
Dock to Stage	90'
Stage Door	16'w x 14'h
Shore Power.....	200amp main with 2-NEMA 14-50, 2-NEMA 10-50, 20amp NEMA 5-20

Harold Miossi Hall Stage

Sprung Wood Floor, with Masonite Covering

Proscenium Opening	49' 9" wide (25' 10" high at center, 22' 10" high at sides)
Apron to Plaster Line	11' 8" center, 9' 8" sides
Lift 1 to Plaster Line	24' 6"
Lift 2 to Plaster Line	39' 6"
Pit Depth	9' 6" (spiralift, infinitely adjustable)
Plaster Line to Back Wall	39'
Plaster Line to column face	37' 3"
Centerline to Stage Right	44' 9"
Centerline to Stage Left	49' 3"
Stage Floor to Pinrail	33'
Stage Floor to Loading Bridge	62'
Stage Floor to Grid	70'
Stage Floor to Loft Beams	78' 8"

Harold Miossi Hall Rigging

Single Purchase, Counterweight System, On T-Track Guides

Please see line schedule for exact spacing.

Batten High Trim	66'
Batten Low Trim	4'
Batten Length	60' (cyc pipe 70')
Batten Arbor Length	12'
Batten Arbor Capacity	2000 lb.
Electric High Trim	41' [NOTE: THIS IS A HARD STOP]
Electric Low Trim	4'
Electric Length	60'
Electric Arbor Length	16'
Electric Arbor Capacity	3000 lb.

***FIREWALL: The firewall path shall remain clear of obstructions.**

FLY LINE SCHEDULE

Christopher Cohan Center Harold Miossi Hall San Luis Obispo, California			Show: House Hang Date: rev. 6.24		Show Hang / Changes				
Line #	Distance From Previous set	Distance from Plaster Line	House Setup	This Show	Notes	Weight	Max Out Trim	Lineset Type	
		0"	The firewall path shall remain clear of obstructions						Firewall
1	Not Much	10"	FREE SET (inside smoke pocket)	Not recommended for flying curtains or scenery - Pipe = 53'-6" length			Grid (68')	Single Pipe	
2	5"	1'-3"	Guillotine MAIN / DS Valance	Guillotine MAIN / DS Valance			Grid (68')	Single Pipe	
3	6"	1'-9"	Main Drape - TRAVELER / DS Tormentors	Main Drape - TRAVELER / DS Tormentors			Grid (68')	Single Pipe	
4	10"	2'-7"	Scrim				Grid (68')	Single Pipe	
5	6"	3'-1"	FREE SET				Grid (68')	1' Truss Pipe	
6	8"	3'-9"	# 1 Electric (High Trim 41')	# 1 Electric (High Trim 41')			41'	4' Truss Pipe	
7	6"	4'-6"	FREE SET				Grid (68')	1' Truss Pipe	
8	6"	5'-0"	15'w x 20h masking legs for movie screen				Grid (68')	1' Truss Pipe	
9	6"	5'-6"	Movie Screen (Frt. Proj) 40'x22'-6"				Grid (68')	Single Pipe	
10	6"	6'-0"	FREE SET				Grid (68')	1' Truss Pipe	
11	6"	6'-6"	FREE SET				Grid (68')	Single Pipe	
12	6"	7'-0"	Batten speakers for Constellation System				Grid (68')	1' Truss Pipe	
13			#1 Ladder	#1 Ladder				Ladder	
14	12"	8'-0"	#1 Border				Grid (68')	1' Truss Pipe	
15	6"	8'-9"	Front/Rear 20'x12' Pro Screen				Grid (68')	Single Pipe	
16	6"	9'-3"	#1 Legs -TRAV				Grid (68')	1' Truss Pipe	
17	6"	9'-9"	FREE SET				Grid (68')	Single Pipe	
18	6"	10'-9"	#2 Electric (High Trim 41')	#2 Electric (High Trim 41')			41'	4' Truss Pipe	
19	6"	11'-8 3/4"	FREE SET				Grid (68')	Single Pipe	
20	6"	12'-3"	FREE SET				Grid (68')	1' Truss Pipe	
21	6"	12'-9"	FREE SET				Grid (68')	Single Pipe	
22	7"	13'-4"	FREE SET				Grid (68')	1' Truss Pipe	
23	5"	13'-9"	FREE SET				Grid (68')	1' Truss Pipe	
24			#2 Ladder	#2 Ladder				Ladder	
25	9"	14'-8"	#2 Masking Border				Grid (68')	1' Truss Pipe	
26	9"	15'-3"	#2 Legs - TRAV				Grid (68')	Single Pipe	
27	10"	16'-1"	FREE SET				Grid (68')	Single Pipe	
28	6"	16'-7"	FREE SET				Grid (68')	1' Truss Pipe	
29	8"	17'-3"	# 3 Electric (High Trim 41')	# 3 Electric (High Trim 41')			41'	4' Truss Pipe	
30	17"	18'-8"	FREE SET				Grid (68')	Single Pipe	
31	9 1/4"	19'-5 1/4"	FREE SET				Grid (68')	1' Truss Pipe	
32	9 1/4"	20'-2 1/2"	FREE SET				Grid (68')	Single Pipe	
33	5 3/4"	20'-8 1/4"	FREE SET				Grid (68')	1' Truss Pipe	
34	5 3/4"	21'-2"	# 3 Masking Border				Grid (68')	Single Pipe	
35	8"	21'-10 1/2"	FREE SET				Grid (68')	1' Truss Pipe	
36			#3 Ladder	#3 Ladder				Ladder	
37	10"	22'-8 1/2"	#3 Legs - TRAV				Grid (68')	Single Pipe	
38	9"	23'-6 1/2"	FREE SET				Grid (68')	Single Pipe	
39	14"	24'-8 1/2"	# 4 Electric (High Trim 41')	# 4 Electric (High Trim 41')			41'	4' Truss Pipe	
40	12"	25'-8 1/2"	FREE SET				Grid (68')	1' Truss Pipe	
41	6"	26'-2 1/2"	FREE SET				Grid (68')	Single Pipe	
42	7 1/4"	26'-9 3/4"	FREE SET				Grid (68')	1' Truss Pipe	
43	7 1/2"	27'-5 1/4"	#4 Masking Border				Grid (68')	1' Truss Pipe	
44			#4 Ladder	#4 Ladder				Ladder	
45	15 1/4"	28'-8 1/2"	#4 Legs - TRAV				Grid (68')	Single Pipe	
46	6"	29'-2 1/2"	FREE SET				Grid (68')	1' Truss Pipe	
47	6"	29'-8 1/2"	FREE SET				Grid (68')	Single Pipe	
48	12"	30'-8 1/2"	#5 Electric (High Trim 41')	#5 Electric (High Trim 41')			41'	4' Truss Pipe	
49	12"	31'-8 1/2"	Traveler Track				Grid (68')	Single Pipe	
50	6"	32'-2 1/2"	FREE SET				Grid (68')	1' Truss Pipe	
51	6"	32'-8 1/2"	FREE SET				Grid (68')	Single Pipe	
52	5 1/2"	33'-2"	FREE SET				Grid (68')	1' Truss Pipe	
53	6 1/2"	33'-8 1/2"	FREE SET				Grid (68')	1' Truss Pipe	
54	6"	34'-2 1/2"	FREE SET				Grid (68')	1' Truss Pipe	
55	6"	34'-8 1/2"	Blackout /TRAV				Grid (68')	1' Truss Pipe	
56	6"	35'-2 1/2"	FREE SET				Grid (68')	1' Truss Pipe	
57	6"	35'-8 1/2"	Cyclorama (White)				Grid (68')	Single Pipe	

37' - 3" Back wall column face

Please check with staff before assigning flies for your show.

Notes: Plaster Line (0'-00") is safety curtain line (masonite joins hardwood floor).
 All battens are 60-foot with 6 pickups except Torms & Cyc (70-foot), and line set 1 (53' 6").
 Grid Top is 70-feet; Low Trim is 4-feet. Loading Bridge is at 62-feet.
 Soft Goods are 30-feet high. All legs are full-stage travellers.
 Electrics high trim is 41-feet. Cannot be altered.

HOUSE EQUIPMENT

Harold Miossi Hall Soft Goods

- Main Teaser Cherry Red (30'h x 60'w)
(Doubles As Guillotine Main)
- Main Drape Cherry Red (30'h x 60'w)
(Full Width Traveler)
- (4) Masking Borders Black (12'h x 90'w)
- (4 sets of 2) Legs Black (30'h x 32'6" w) (Full stage width travelers)
- (6) Auxiliary Legs Black (30'h x 15'w)
(16-oz Commando)
- (8) Auxiliary Legs Black (30'h x 15'w)
(Duvateen)
- Gold Lamé (32'h x 60'w)
(Full Width Traveler)
- Speaker's Curtain White (32'h x 60'w)
(Full Width Traveler)
- Metallic Silver/Black Bouclé (32'h x 60'w)
(Full Width Traveler)
- Navy Blue Satin (32'h x 60'w)
(Full Width Traveler)
- (3) Sharkstooth Scrim Black (30'h x 60'w)
- Sharkstooth Scrim White (30'h x 60'w)
- White Bounce (30'h x 60'w)
- White CYC seamless (30'h x 60'w)
- White CYC with seams (35'h x 65'w)
- (5) Zetex Black Fire Borders (3'h x 54'w)

Rugs

- Pit Carpet Black Fitted to Lift 1
(Orchestra Pit)
- (2) Beige Rugs 12' x 20'
- (2) Drum Rugs black 8' x 8'

Stage Equipment

Dance Floor:

Black Harlequin Cascade (covers from edge of apron to upstage wall and 60' wide)

Risers:

- Wenger Versalite Portable Staging
 - (30) 4' x 8' platforms
 - (6) 4' x 4' platforms
 - (120) 6" legs
 - (204) 12" legs
 - (144) 18" legs
 - (204) 24" legs
 - (120) 30" legs
 - (196) 36" legs
 - (4) Wenger Step Units 2-steps for 24" rise
 - (2) Wenger Step Units 4-steps for 40" rise
 - (10) Wenger Tourmaster Choral Riser 4 steps with back rails
 - (9) Wenger Legacy Acoustic Shells

Pianos

- (2) 9' Steinway "D" Concert Grand Pianos
- (1) Yamaha U3 upright piano
- (1) Yamaha P2 upright piano

Forbes Pipe Organ

Opus 129 designed & built by CB Fisk Inc.
38 voices, 48 ranks, 2,767 pipes

HOUSE ELECTRICS (Harold Miossi Hall)

Road Power (1) 400 Amp 3 Phase (120/208) Cam-lok located stage left
(1) 400 Amp 3 Phase (120/208) Cam-lok/tails located stage left
(1) 175 Amp 3 phase (120/208) Cam-lok located up stage right

NOTE: Power cable from service must meet code: 4/0 from 400amp service and 2/0 from 200amp service.

House Power Cable (5 wire cam-lok) 2x25'-4/0 cables, 1x10'-4/0 cables, 2x25'-2/0 cable

Control Console ETC EOS Ti 24k with one 1x20 motorized fader wing

Auxiliary Consoles ETC GIO@5 24k with one 1X10 motorized fader wing

Data Distribution sACN (Streaming Architecture Control Network) throughout venue
ETC Gateway inputs/outputs on every electric, Stage Left, Stage Right and FOH Position

Dimmer Type ETC Sensor

Number of Stage Dimmers 560

Wattage of Stage Dimmers 2,400 Watts

Voltage of Stage Dimmers 115V 60Hz

Location Of Circuits:

Electrics

- Electric #1 (56) Stage Pin circuits & (4) 20 amp non-dim Edison circuits
- Electric #2 (38) Stage Pin circuits & (4) 20 amp non-dim Edison circuits
- Electric #3 (32) Stage Pin circuits & (4) 20 amp non-dim Edison circuits
- Electric #4 (38) Stage Pin circuits & (4) 20 amp non-dim Edison circuits
- Electric #5 (32) Stage Pin circuits & (4) 20 amp non-dim Edison circuits

Ladders

- S/R: 4 Ladders
- S/L: 4 Ladders

Each ladder contains 12 Stage Pin circuits & a 20 amp non-dim Edison circuit

Floor Pockets

- S/R: 5 pockets
- S/L: 5 pockets

Each pocket contains 3 Stage Pin circuits & a 20 amp non-dim Edison circuit

Cyc Pockets

- US: 9 pockets

Each pocket contains 4 Stage Pin circuits & a 20 amp non-dim Edison circuit

Grid Drops 12 circuits on Socapex located at SL pin rail

On Stage: (2) Drop Boxes each with 12 Stage Pin circuits

Balcony Rail: (32) Stage Pin circuits & (8) 20 amp non-dim Edison circuit

Ante Proscenium #1: (32) Stage Pin circuits & (6) 20 amp non-dim Edison circuit

Ante Proscenium #2: (32) Stage Pin circuits & (6) 20 amp non-dim Edison circuit

Ante Proscenium Ctr Ring: (16) Stage Pin circuits & (6) 20 amp non-dim Edison circuit

Pit Lift #1: (8) Stage Pin circuits

Pit Lift #2: (8) Stage Pin circuits

Trap Room: (12) Stage Pin circuits

HOUSE LIGHTING SYSTEM

Lighting Instruments

ETC Source Four

- (12) 5 Degree
- (30) 10 Degree
- (68) 19 Degree
- (77) 26 Degree
- (52) 36 Degree
- (42) 50 Degree

Strand Fresnels

- (30) 6" 1kw
- (40) 8" 2kw

ETC Source 4 PAR

- (64) ETC Source 4 PAR bodies
- (64) WFL S4 PAR lens
- (64) MFL S4 PAR lens
- (64) NSP S4 PAR lens
- (64) VNSP S4 PAR lens

(22) ETC ColorSource PAR

- (22) Wide, med. & narrow oval diiffusers

Martin

- (6) MAC 2000 Profile (Main Hall)
- (8) MAC401Dual RGB Zoom (Pavilion)
- (4) MAC III Profile

Vari*Lite

- (4) VL 3500Q Spot (see FOH plot)

Robe

- (17) BMFL Spot

GLP

- (12) Impression X4L
- (4) Selecon Pacific Zoom 23-50
- (12) Strand Iris Cyclights, 2-Cell, (1kw lamps)
- (8) Altman MR-16 strip lights, 6' x 3-circuit
(38 degree 75W)
- (4) Strong Xenon Super Trouper
2000w Long Throw Follow Spot
[Spot Booth Throw Distance: 120 feet]

- (4) Dataflash AF1000
- (1) DF-50 Hazer
- (1) MGD Max 5000 fogger
- (14) Chroma-Q Color Changers M1
- (16) Chroma-Q Color Changers Mk2
- (4) Rosco ImagePro image projector
- (3) Rosco single gobo rotators
- (2) Rosco double gobo rotators
- (1) Mirror ball 18"

Accessories:

- (12) S4 Iris
- (16) Top Hats S4
- (20) Half Hats S4
- (30) Barn Doors 6"
- (40) Barn Doors 8"
- (40) Donuts S4
- (19) Gobo holders A size
- (70) Gobo holders B size
- (24) Floor Stands
- (14) Boom Bases
- (64) Boom Side Arms

Personnel Lifts:

- JLG AXCESSOR 20 DVL
25'6" Working Height
19'6" Platform Height
Motorized Drive
- Handy Herman III Model 24D
30' Working Height
24' Platform Height

Projectors and Screens:

- (1) Panasonic 7,000 lumen projector
- (1) Barco DP2K-23B 24,500 lumen projector
(located in light booth)
- (1) 21'4" x 12' front or rear projection screen
- (1) 40' x 22'6" front projection screen

HOUSE AUDIO SYSTEM

SOUND LEVELS: Maximum sound level not to exceed 95db.

Front of House Speakers (Harold Miossi Hall):

Zones: left, right, ground, balcony fill, lobbies, and backstage.

Line Arrays (L/R): (1) Meyer 600HP 2x15" Sub & (11) Meyer Mica [2-1.2" & 2-10"]

**No center clusters*

Ground: Meyer UPQ-2P (1.5" & 15") Meyer 600-HP sub (2x15") additional subs can be added

Front Fill: (4) Meyer UP-4XP (1-1" & 2-4")

Balcony Fill: (6) Meyer UP Junior (1-2" & 1-8")

Speaker management: (2) Meyer Galileo 616s with analog inputs

Front of House Sound System (Harold Miossi Hall):

FOH Console: Allen & Heath DLive s7000 surface

DM64 Mixrack with 64 inputs and 32 outputs

Monitor System:

MON Console: Allen & Heath s5000 surface w/ 48 input

DM0 Mixrack: Inputs digitally split from DM64 w/ independent trim controls

Speakers: (18) L'Acoustic X12 coaxial wedges

Amplifiers: L'Acoustic LA-RAKII (12 mixes) & L'Acoustic LA-4 (4 mixes)

In ear monitors: 4 Shure PSM 900

Splitters: Whirlwind 3-way stage splitter with Jensen transformers

Distribution: Whirlwind Medusa series stage boxes & snakes

Playback/Record

- MacMini with Qlab & iTunes at FOH
- Tascam SS-R250N at FOH and SS-CDR250n in booth
- Tascam CDRW2000
- Numark CDN77USB Dual USB and MP3/CD player

Communications:

Intercom: Clear-Com 4-channel wired throughout the facility

(10) Digital wireless 2-channel CellCom beltpacks

(5) Analog wireless Clear-Com beltpacks

Dry-line or interface for touring systems

HOUSE AUDIO SYSTEM

Microphones

AKG

- (10) C-414B-TLII
- (7) C480 preamp
 - C480 Capsules:
 - (2) CK61 cardioid
 - (2) CK62 omni
 - (4) CK63 hypercardioid
 - (6) Shotgun
- (4) C3000 cardioid
- (2) SE300B hyper cardioid
- (1) D 112
- (5) D3900

(6) Beyer 88

Countryman

- (8) E6i earset mic
- 4) B2D lavalier mic

(4) Crown PCC 160

(2) DPA SMK4060 omni

(4) Neuman KMS 105

(1) Rode NT-4

Sennheiser

- (9) MDS 421
- (5) 441
- (4) e609
- (4) e604

Shure

- (11) SM 57 (1) Beta 52a
- (11) SM 58 (2) Beta 57a
- (8) SM 81 (5) Beta 58a
- (1) SM 86 (1) Beta 87c
- (5) SM 87 (1) Beta 91a
- (3) KSM 32 (5) Beta 98

Shure Wireless System

- (8) UR4D+ UHF-R Receivers
- (8) Hand Held transmitter body UR-2
- (8) KSM9 capsule
- (8) SM 58 capsule
- (8) SM 87A capsule
- (8) Bodypack transmitter UR-1
 - (Bodypacks have TA4M connectors)

Shure Wireless System (cont.)

- (8) MX 185 Cardioid Lavalier Mic
- (8) WL184 Supercardioid Lavalier
- (8) WL 50B Omni Lavalier
- (8) Beta 53 Headset Mic
- (8) Instrument Cables

DI Boxes:

(13) Countryman DI

Radial

- (2) JDI passive DI
- (3) JPC stereo PC DI
- (4) J48 active DI
- (2) J48 stereo active DI
- (3) PRO AV-1 multimedia DI
- (2) PRO AV-2 multimedia DI

Mic Stands

- (14) Heavy round base microphone stands
- (26) Medium round base microphone stands
- (11) Short round base microphone stands
- (45) Boom arms
- (5) Tripod microphone stands
- (6) Shure A98KCS Horn clamps for SM98
- (20) Claws
- (6) Guitar stands
- (2) Electric guitar stands

Front of House Mix Position:

Harold Miossi Hall has a permanent FOH mix position with an A&H DLive s7000. To accommodate tour consoles our mixer can be removed leaving a heavy duty steel framed 10' x 4' table for the tour console to be placed on. If your console has to sit on top of your racks we can strike the 10' x 4' table leaving a 10'10" x 9'9" area for the tour equipment. Row S seats can be removed and tables can be placed to either side of the sound mix position for lighting boards, etc. A diagram of the mix position is located on page 18.

HOUSE AUDIO SYSTEM

Harold Miossi Hall Electronic Orchestra Shell *For Thrust Stage Orchestras & Choirs*

The Meyer Constellation System creates an electronic shell for conductors and musicians to hear themselves better on stage. The system is composed of speakers and microphones suspended over the thrust stage on computer controlled motors which can be deployed when needed. Additional speakers are mounted in the proscenium, stage right and left walls and upstage batten. A scrim conceals the upstage speakers from view. The Constellation System is used with the thrust stage for orchestras and choirs. The system eliminates the need for choral shells. The speakers and microphones suspended over the stage are flown out to the ceiling when not in use.

Constellation System components:

- (16) DPA CSM4000 compact cardioid microphones suspended over the thrust stage.
- (20) Meyer Stella 8C speakers suspended over the thrust stage
- (4) Meyer UP-XP speakers wall mounted stage right
- (4) Meyer UP-XP speakers wall mounted stage left
- (4) Meyer UP-XP speakers mounted in the proscenium arch
- (6) Meyer UP-Junior speakers mounted on upstage batten
- (6) Meyer UMS-1P subs (2 stage right, 2 stage left, and 2 upstage)

Processing is done with 1 Meyer D-Mitri Core Processor and 1 Meyer D-Mitri VRAS Processor



POLICIES

ANIMALS PROHIBITED: Animals are not allowed for any reason except as an integral part of the show or service animals.

BALLOONS: No helium balloons are allowed in the Performing Arts Center.

BLOCKING OF HOUSE EGRESS: Due to fire regulations, no aisle or part of an aisle or Exit doorway shall be blocked in any manner.

CHAPERONING OF CHILDREN: Events incorporating groups of children must have adult supervision at all times in the performance and support areas. If the client does not provide adequate chaperones, additional PAC crew may be assigned at client expense.

CONTROL OF PREMISES: It is understood that no agreement with the client relinquishes PAC's right to control the management of the facility and to enforce all necessary laws, rules and regulations. Client will afford the PAC staff the right to enter any part of the PAC at any time in the performance of their normal job duties.

CONTROL OF STAGE EQUIPMENT: No stage rigging, stage lighting or any other stage equipment can be used or changed without the prior approval of the PAC technical staff.

COPYRIGHT: Royalty payment and copyright clearance is the sole responsibility of the client. Client must accept all responsibility for and absolve the PAC from any liability or expense arising out of the use of any composition, work or material covered by copyright.

DOORS: Doors to the auditorium open generally 30 minutes prior to curtain time. All presets, sound and light checks must be completed before that time. Lobby doors open to the public one hour prior.

DAMAGES: Damages to any PAC property or rental property as a result of an event are the exclusive financial responsibility of the client, regardless of who caused the damage.

DRESSING ROOMS: Dressing rooms must be left in a neat and orderly fashion or a cleaning charge may be imposed.

DRAPERIES: Stage draperies may not be altered, pinned or taped. Removal or relocation must be under the supervision of PAC technical staff.

EJECTION: The PAC reserves the right to eject any objectionable person.

FIREPROOFING: All scenic materials brought in by client must be flameproofed and/or conform to the Uniform Fire Code. The user must conform to University fire code regulations, which include but are not limited to:

1. All scenery and softgoods provided by user shall be flame retardant treated or non-flammable in nature. Cardboard is NOT permitted.

2. No open flame or flammable fluids shall be used without appropriate State Fire Marshal permits. Pyrotechnics shall not be used without appropriate State Pyrotechnic permits and must be under direct supervision of a licensed pyrotechnician.
3. No scenery, drops, properties, decorations or other combustible effects shall be used unless treated for flame retardancy.
4. No obstructions shall be placed in the exitways (including auditorium aisles).
5. Operation of the fire curtain shall not be impaired (such as by scenery crossing the proscenium line).
6. No flammable materials such as bunting, tissue paper, crepe paper, etc. are permitted to be used for decorations. All other materials used for decorative purposes (banners, posters, etc.) must be flameproofed and be able to pass a Fire Department flame test. Oilcloth, tarpaper, sisal paper, nylon and certain other plastic materials cannot be made flame retardant and their use is prohibited. Exceptions require the advance written approval of the Fire Marshal, and may require additional safety measures.

FIRE ALARM: Clients and artists engaged by clients are required to shut down operations (i.e., sound & lighting systems) in the event of a fire alarm. All persons are required to evacuate the building. The fire alarm consists of strobe lights, a siren and voice announcements to evacuate.

FOG AND SMOKE: A technician will be posted at the fire panel when smoke detectors are bypassed to accommodate stage smoke or fog requirements of a show.

FLAME EFFECTS: Any open flame used in any performance or event will require a written permit from the State Fire Marshal.

FOOD & DRINK: No food or drink is allowed on the stage or in the auditorium at any time. Sports bottles or spillproof mugs may be acceptable on stage. All catered food must be arranged through approved vendors. Chewing gum should be discarded before entering the stage.

LOADING DOCK: The loading dock is located on the west side of the PAC and is for loading and unloading of equipment. A limited number of vehicles may be allowed to park at the dock with prior approval on an as needed basis. Any vehicles parked at the dock must display a valid PAC Dock Pass in addition to any campus permits that may be needed, or they will be ticketed.

MEAL BREAKS: Meal breaks shall be scheduled for the PAC technical staff for lunch and dinner. Meal breaks shall be at least one half hour long.

NAILS & TACKS, ETC.: No client shall allow nails, tacks, stage screws, or similar material to be driven or placed in any part of the premises or equipment without the approval of the PAC technical staff. Repair of all damage is the financial responsibility of the client. Poster putty & tape are not permitted on the walls.

OUTSOURCE: Outside services and materials can be arranged for by the PAC as a convenience to the client in accomplishing the needs of the show. Costs will be passed through to the client.

PROSCENIUM: Users may not alter, remove or attach to the wooden proscenium at any time.

PYROTECHNICS: No pyrotechnics will be allowed without the proper state permits and a licensed pyrotechnician. Client is responsible for all costs involved with procuring permits. Client is responsible for any damages arising out of use of pyro, such as burns to softgoods or dancefloor.

PUBLIC SAFETY: Client agrees that at all times he/she will conduct his/her activities with full regard for public safety, and will observe and abide by all applicable regulations and requests by duly authorized campus and governmental agencies responsible for public safety.

RECORDING SERVICES: Technical Services will facilitate any recording requests made by the client. However, it must be understood by the client that the performance spaces are not recording studios. Therefore, PAC does not guarantee the control of the performance spaces that would be inherent in a studio. Client warrants that all appropriate rights clearances and performance releases have been obtained.

RIGGING: Rigging shall be under the supervision of PAC Staff ONLY, with PAC crew as needed. All flown scenery will be inspected for safety and may be rejected for any cause by the PAC staff person in charge.

RULES: By contracting with the PAC, client agrees to be bound by all provisions in these rules. Client shall ensure that all participants are made aware of these rules & regulations and that they must abide by them.

SCENERY REMOVAL: All scenery, props, costumes, equipment, etc. belonging to the client must be removed by the client immediately following the final performance. All items not removed will be assumed to be trash and disposed of accordingly. There may be an additional charge levied to clean up and remove such debris. Subject to scheduling constraints, some items may be held for later pickup with prior technical department approval.

SCENERY STABILITY: Tall or unstable scenic pieces will be made stable before their use is permitted.

STORAGE. Storage is not available within the facility. Everything must be removed at the time of the loadout.

SECURITY OF VALUABLES: No lockbox is provided to clients of the performance spaces. It is suggested that anything valuable not be brought into the backstage area. Lockable drawers are provided in the dressing rooms.

SECURITY: Only those persons involved with the production are permitted backstage.

SMOKING POLICY: Smoking is not permitted anywhere in the buildings at the PAC.

STANDARDS OF CONDUCT:

1. All individuals have the responsibility to conduct themselves in a manner that is not sexually harassing to others. Sexual harassment will not be tolerated.
2. Any form of violence is unacceptable behavior and cause for removal or further action. This includes belligerence, physical violence and using obscene, abusive or threatening language.
3. Intoxication, whether from alcohol use or drugs, is a safety hazard and endangers everyone. Intoxicated persons will be suspended and/or ejected immediately.

STAFFING: All clients' production needs are coordinated through the the PAC's Production Manager. All crews are assigned through the Call Steward. PAC Technical Services retains the right to determine the appropriate number of staff to service an event, and to name the specific personnel assigned.

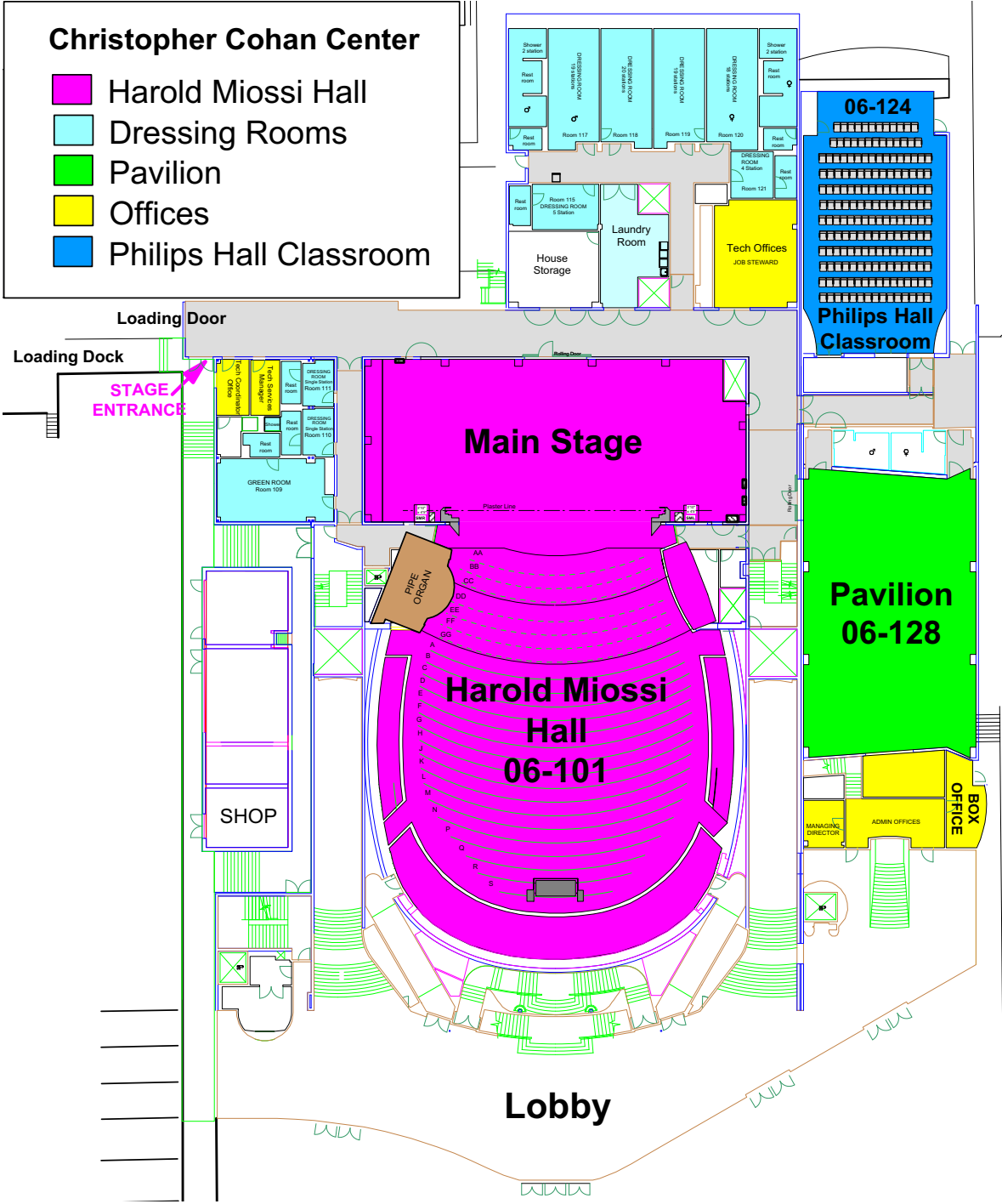
SAFETY: Final approval or denial of potentially dangerous client equipment or processes rests with the Technical Director. If a client's employee or volunteer is deemed unsafe in skill or manner by the supervisor or Technical Director, such person may be required to leave the building. The Stage Manager may conduct a short safety meeting prior to a load-in covering basic safety considerations and rules. The client's employees & volunteers are required to attend the meeting, which will occur prior to the start of any work. It is the responsibility of the client to familiarize themselves, their agents, volunteers and employees with the safety procedures and regulations governing all parts of the facility used by the client. Center employees and guests may not be exposed to unsafe conditions, including excessive sound levels.

SOUND LEVELS: User's event shall not exceed maximum sound decibel levels as established by the Performing Arts Center (maximum 95db measured at the mix position — all frequencies). The Performing Arts Center has the audience enjoyment of the performance and their safety to consider, therefore, PAC staff will have final responsibility to adjust house sound levels as necessary. Client contracts with artists shall have this clause made a part of the agreement.

TAPE: Tape is not allowed on any walls, doors or windows.

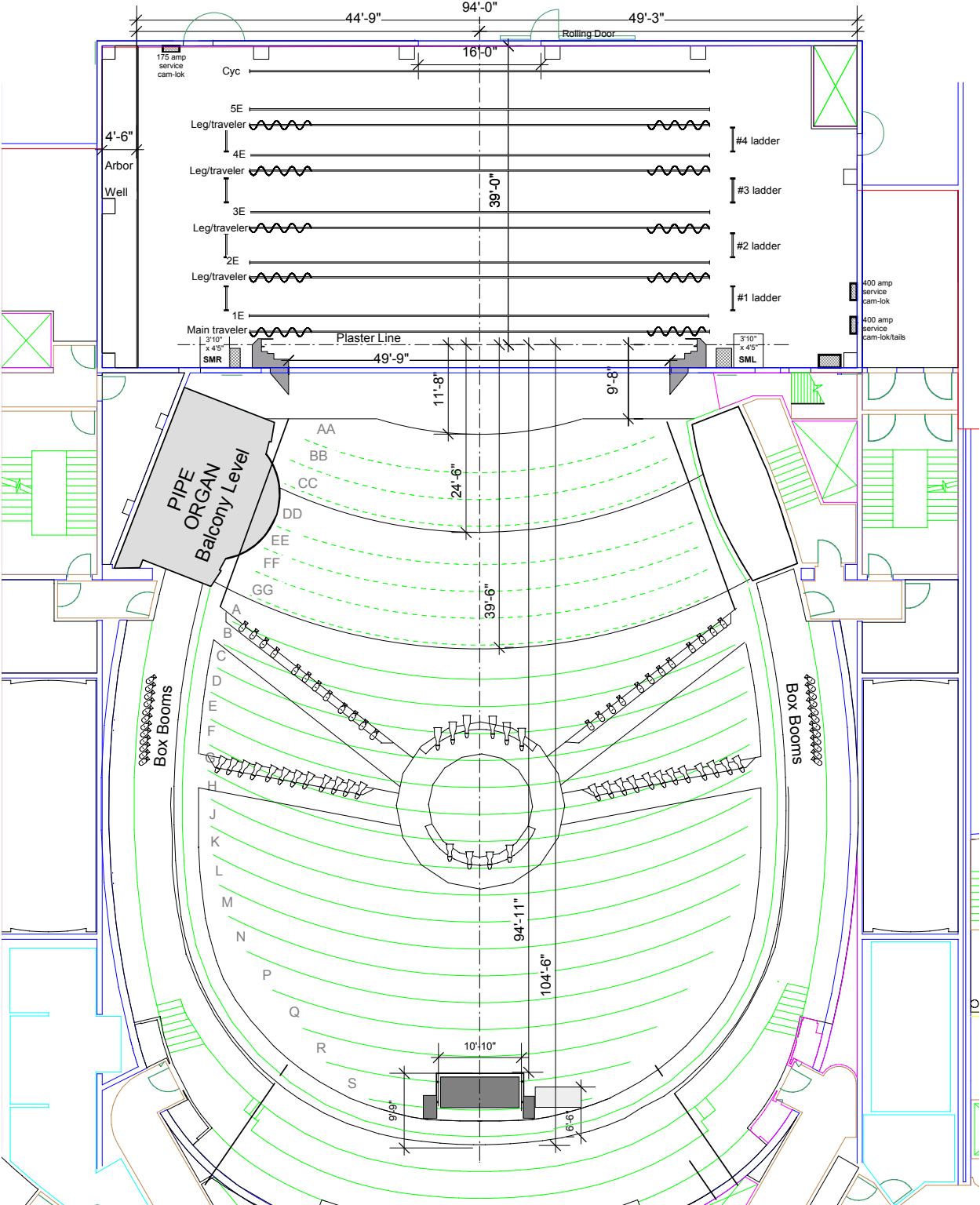
FLOOR PLANS

Christopher Cohan Center Map



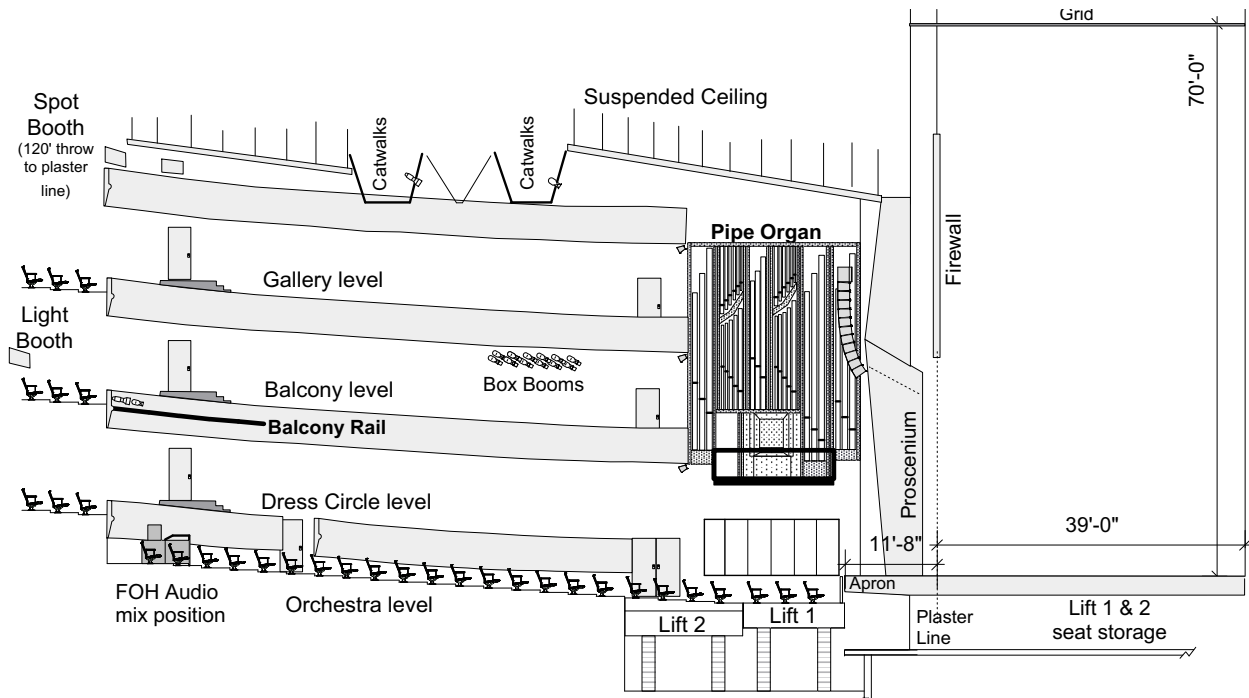
FLOOR PLANS

Harold Miossi Hall



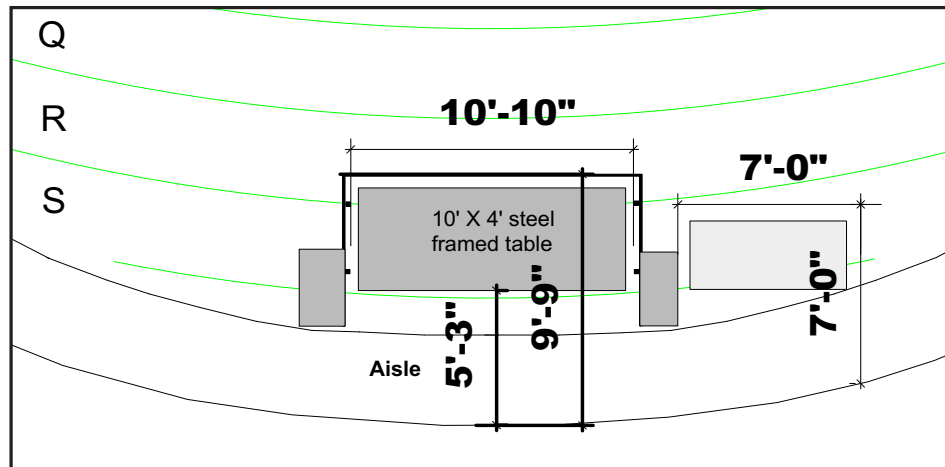
FLOOR PLANS

Harold Miossi Hall Section View



Spiral lifts in full seating position. With seats off lift 1 & 2 are independently adjustable from stage height to 9'6" below stage height

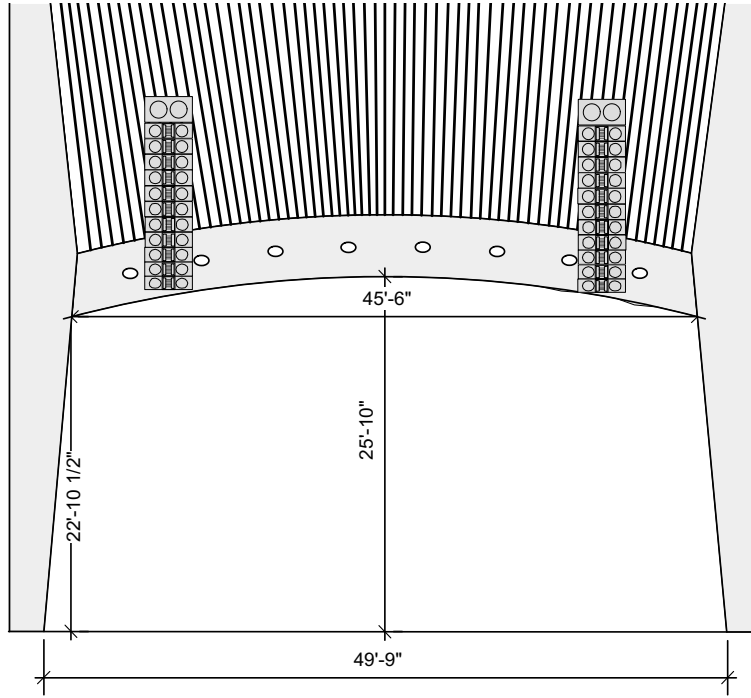
Front of House Mix Position



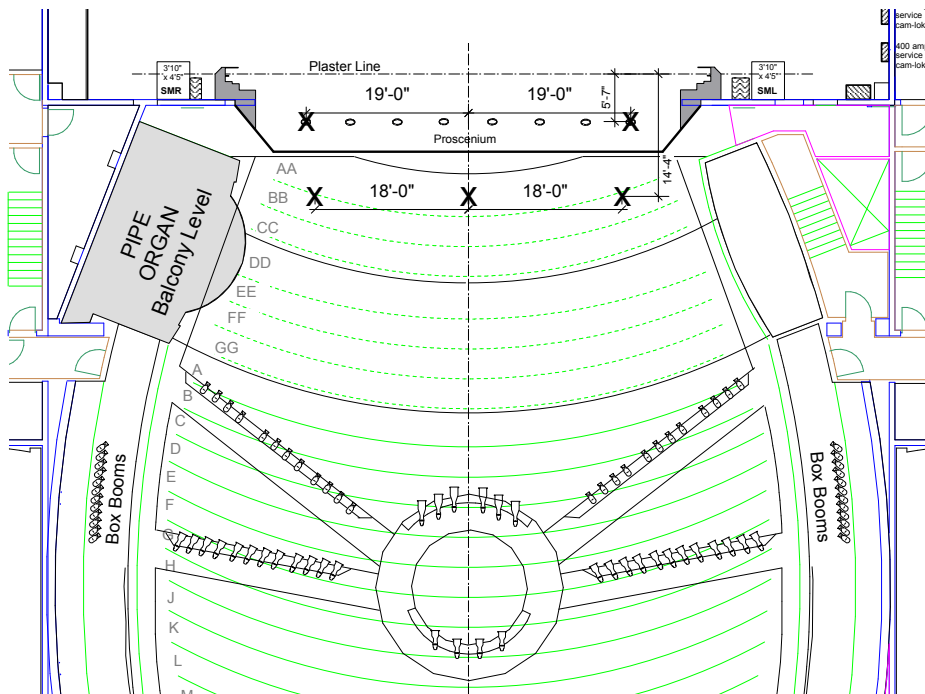
Harold Miossi Hall has a permanent FOH mix position with an A&H DLive s7000 at the rear of the Orchestra with clear overhead. To accommodate tour consoles our mixer can be removed leaving a heavy duty steel framed 10' x 4' table for the tour console to be placed on. If your console has to sit on top of your racks we can strike the 10' x 4' table leaving a 10'10" x 9'9" area for the tour equipment. Row S seats can be removed and tables can be placed to either side of the sound mix position for lighting boards, etc.

FLOOR PLANS

Harold Miossi Hall Proscenium

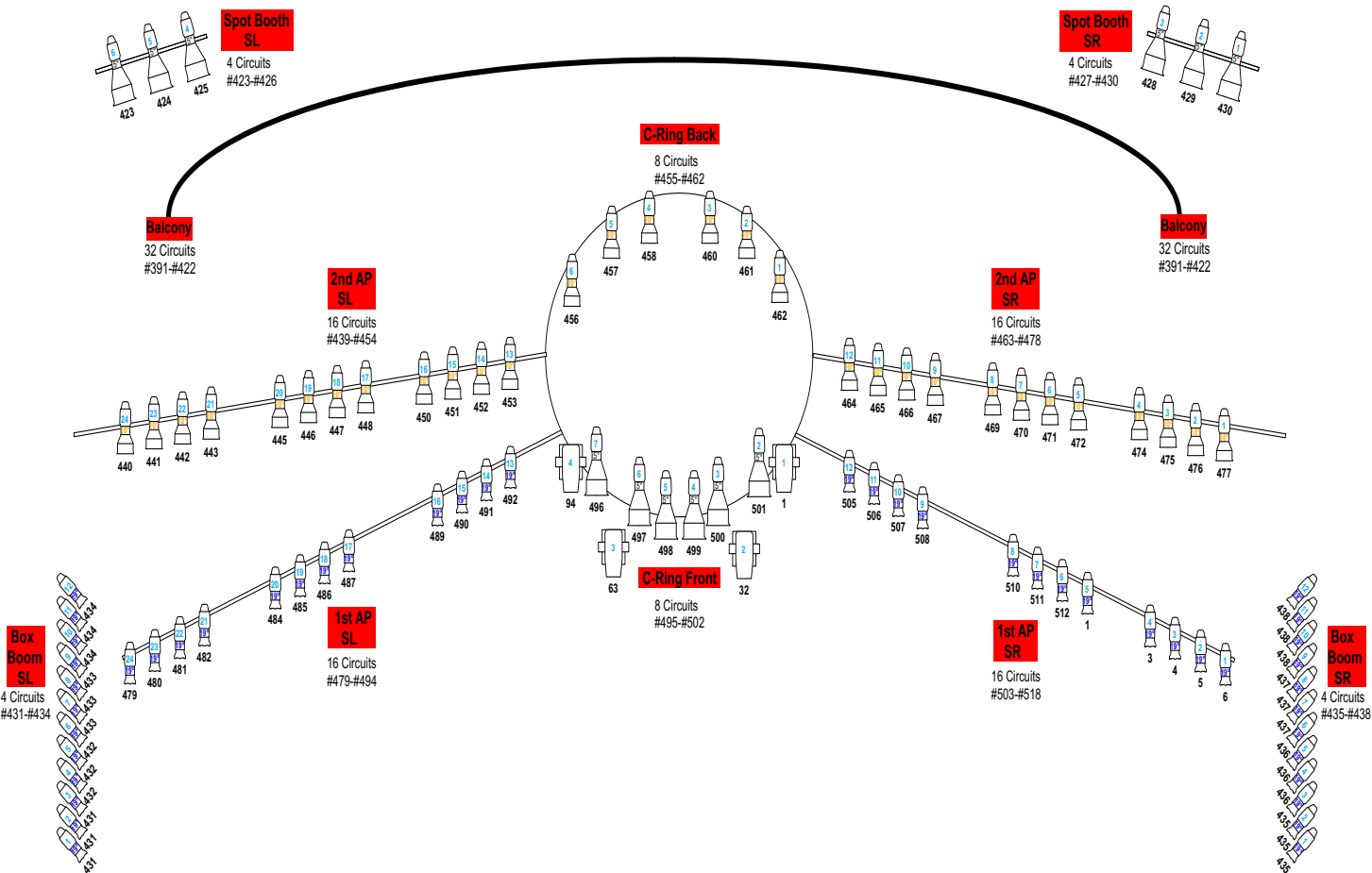



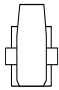


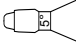
Downstage rigging points: 1 ton max per point



FLOOR PLANS

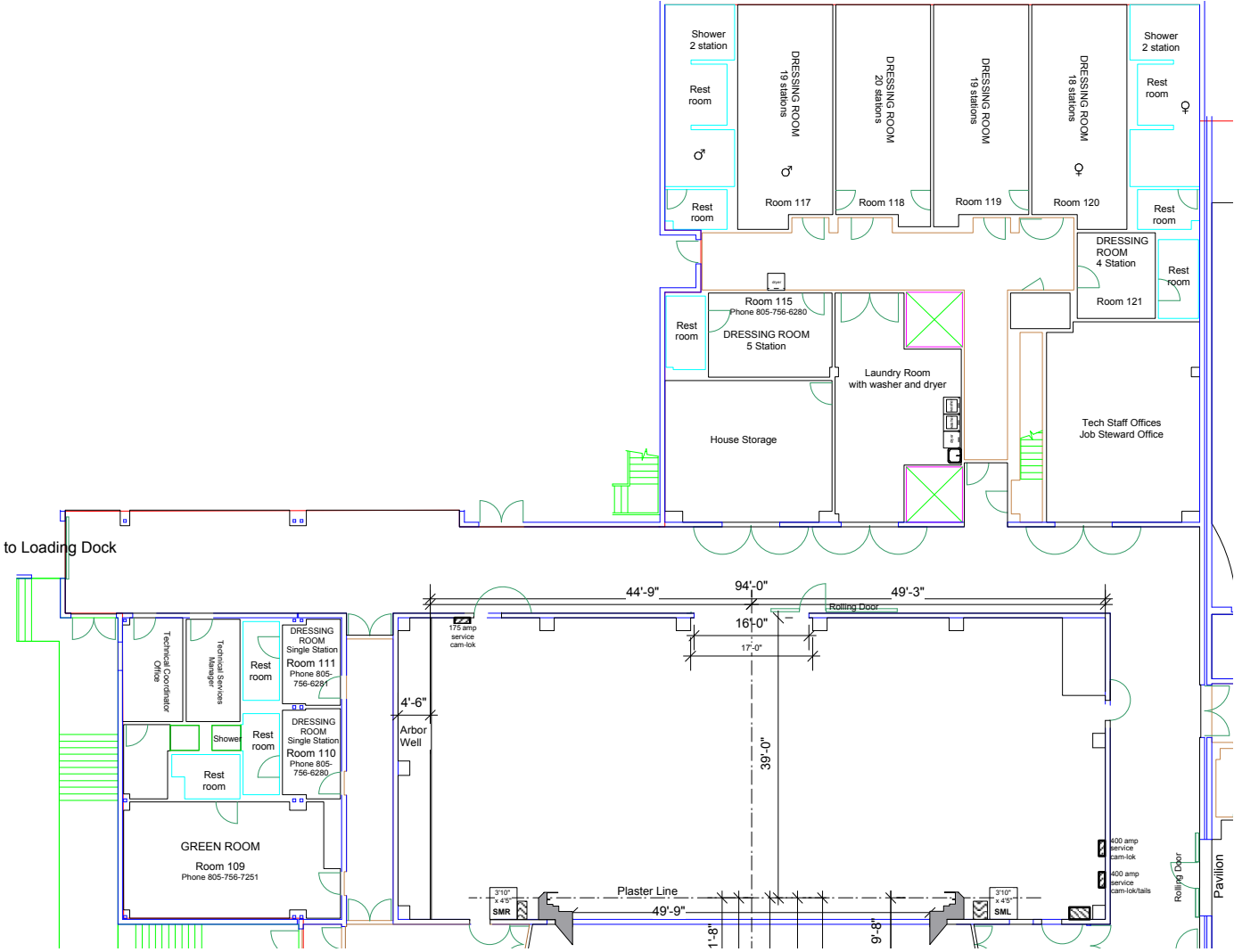
Harold Miossi Hall Light Plot



Source Four Ellipsoidals	Movers	Key
 S-419 (Blue Knob)	 VL 3500Q	 Address Unit#
 S-410 (Yellow Knob)		
 S-405 (Black Knob)		

FLOOR PLANS

Dressing Rooms & Backstage Layout



FLOOR PLANS

Pavilion (Room 128) Dimensions

